



Rozan Khazendar

ROSE-metaREverse

old town

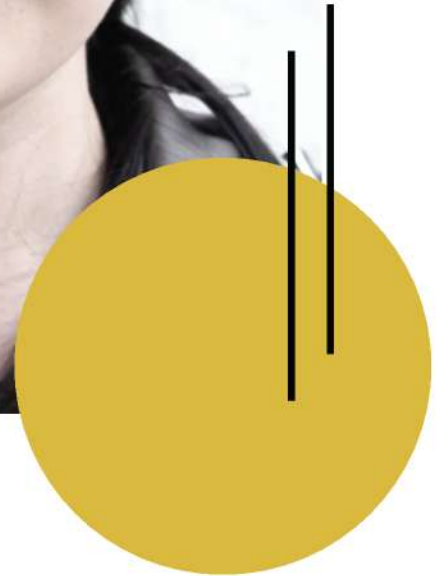
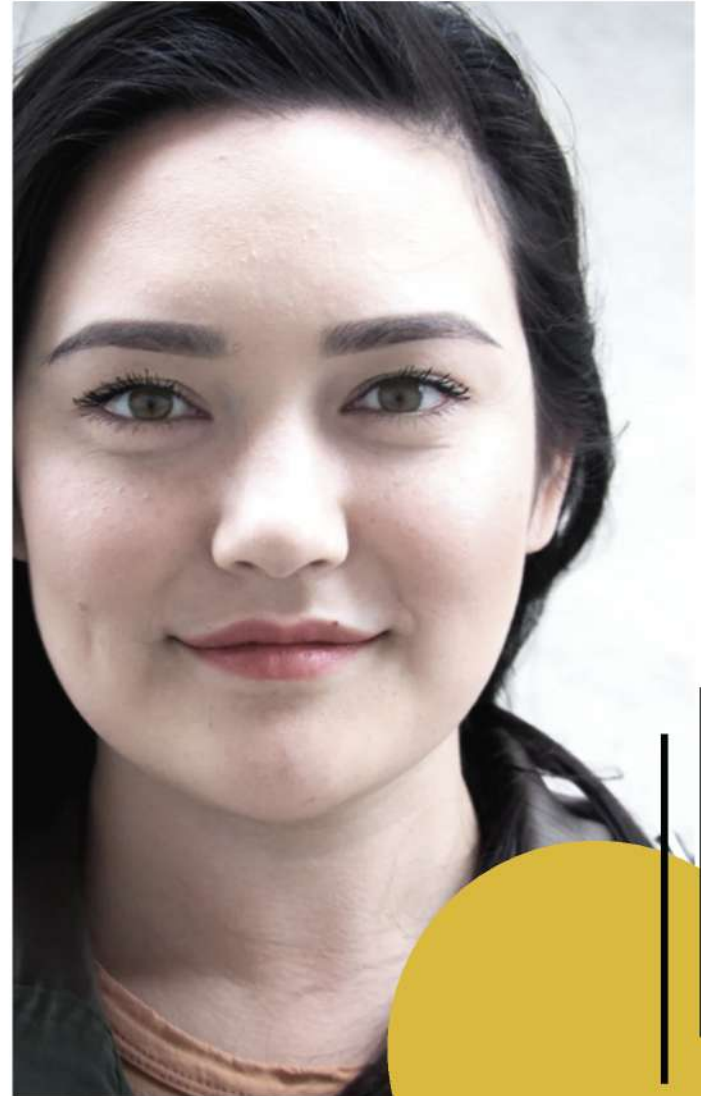
Home sweet home

success passion hope love



Rose
STORY

2022



present



past

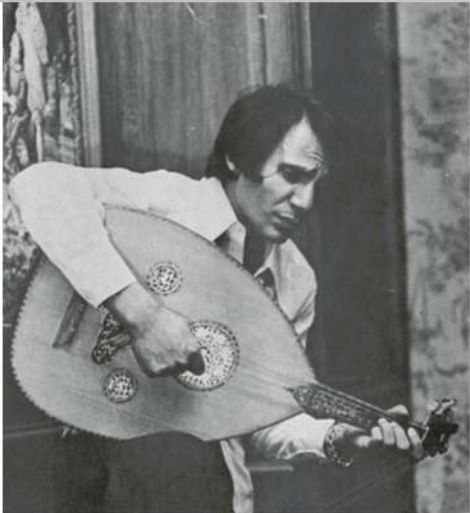
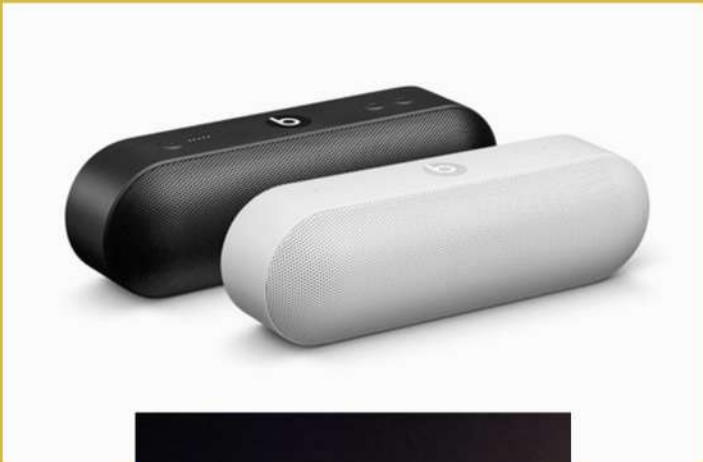


present



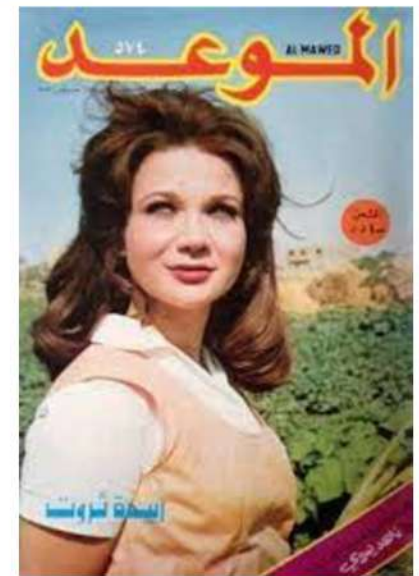
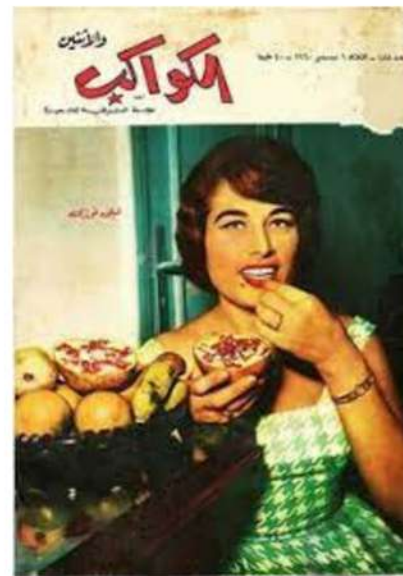
past







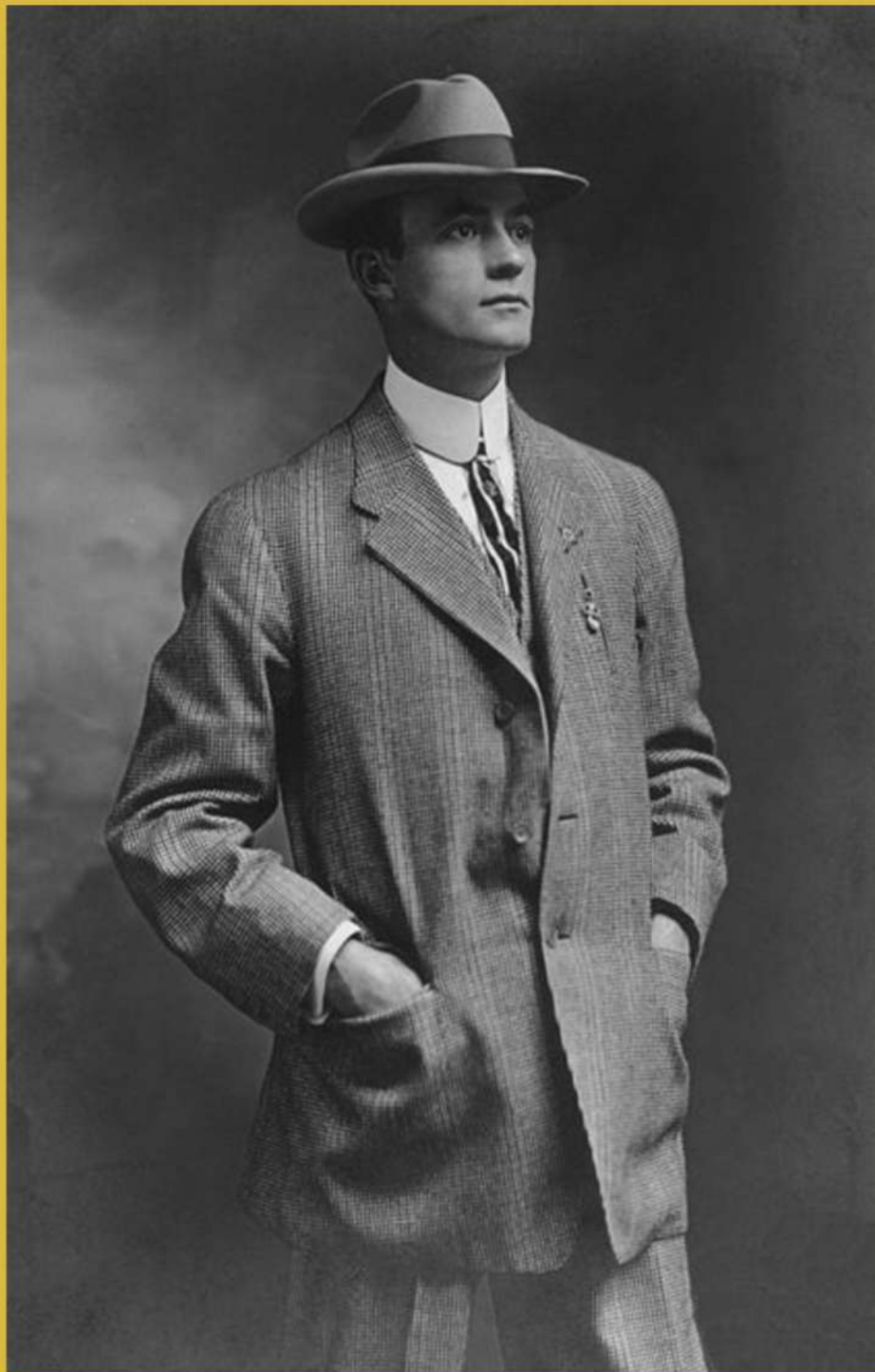




one day



Rose fill in love with
a person she met via
meta**RE**verse



to know the person

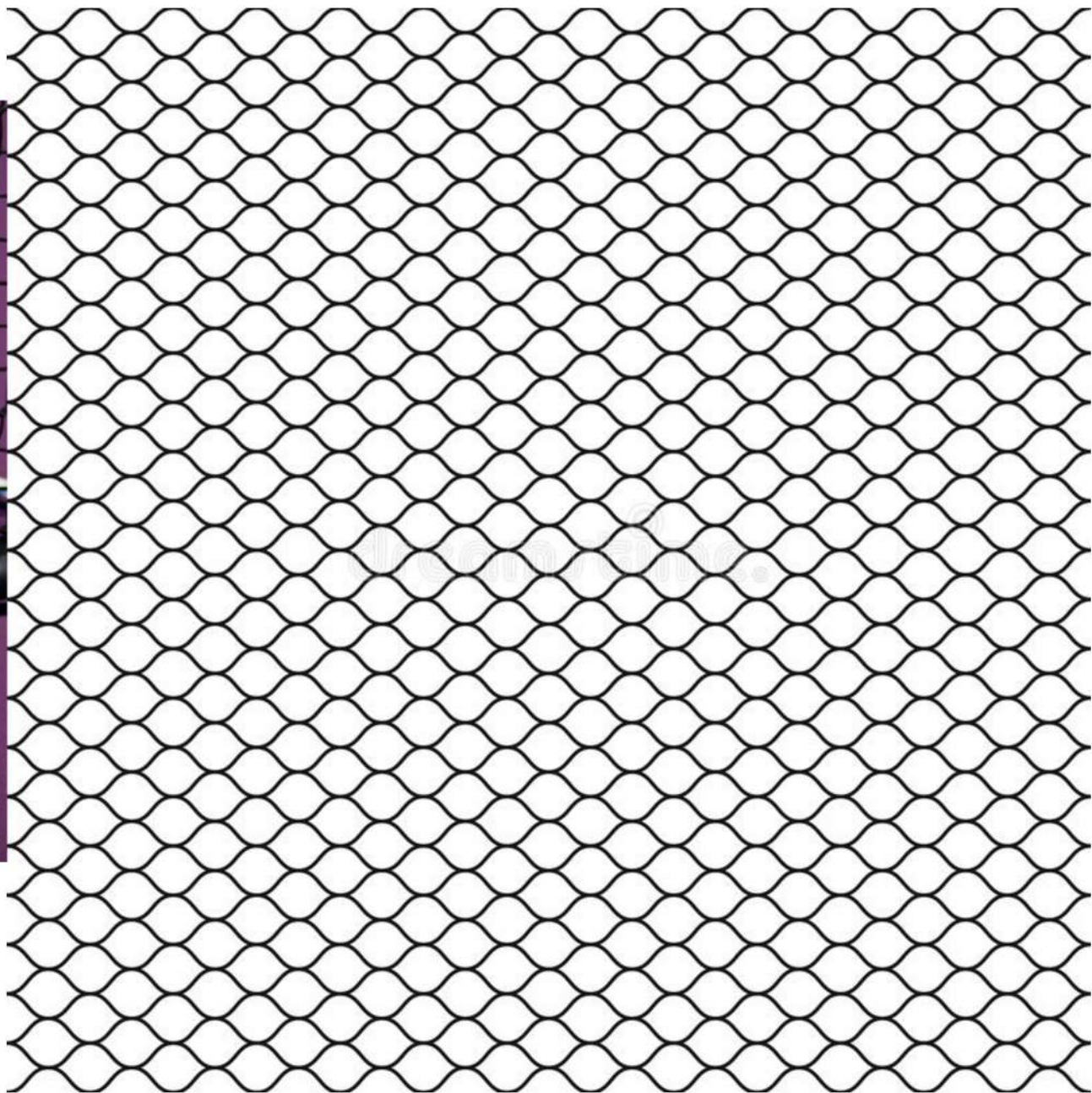
search on these key words

success passion hope love

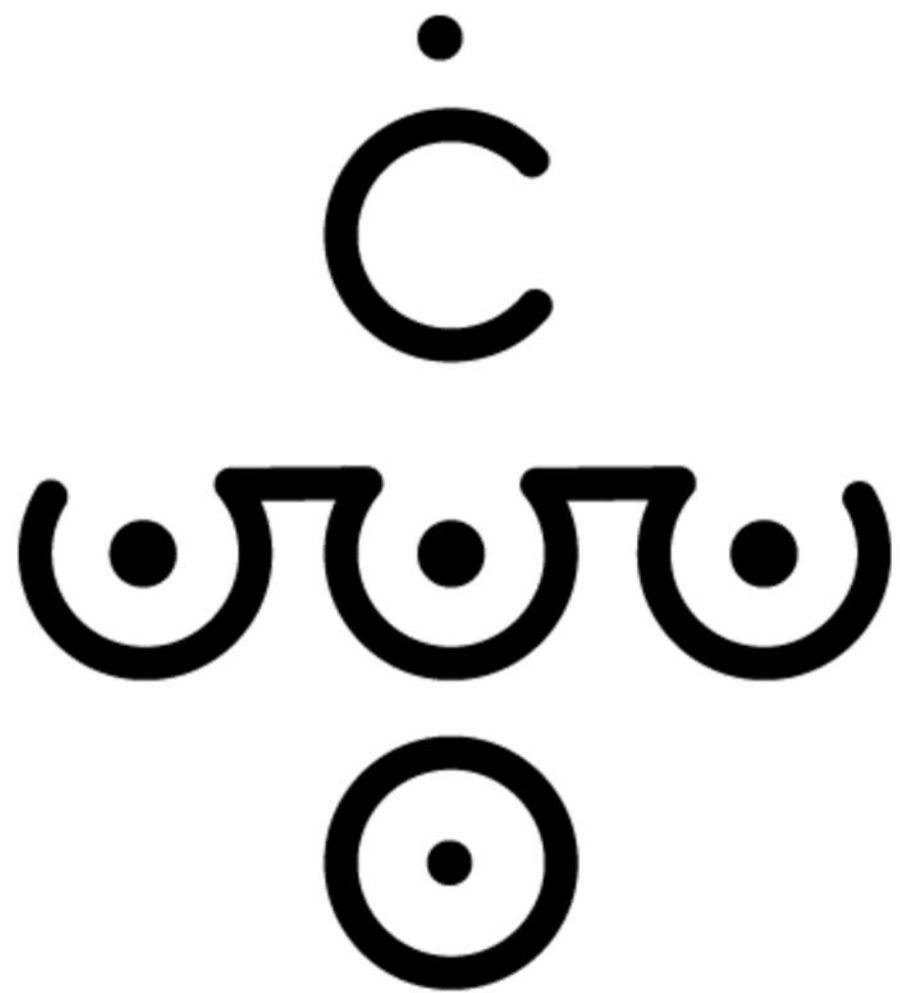
success













Women Seeking Employment:



<https://medium.com/the-thirties/employment-of-women-in-the-1930s-5998fd255f5>



Alicia Keys: On success, identity and growing into her skin

<https://www.marieclaire.co.uk/>

1930s FASHION

Accessories

A woman wore gloves for both day and evening. Day gloves gathered loosely at the cuff. Evening gloves were long opera length.

A simple handbag, small angular hat and shoes always matched.



Day Dresses

Floral prints, polka dots and muted colors filled a daytime wardrobe. Dresses had modest tops, wide sleeves or cape effect and a slender bias cut body with flair at the hem. Length ranged from floor to slightly below the knee. Matching thin belt at the high waist.



Shoes

Shoes had thick heels and full coverage but with ample straps, cutouts and perforations. Two tone heels were very common as well as mixing textures. Oxfords were a daytime comfort shoe

Jewelry



Simple art deco designs or small plain pearls were all the jewelry a woman needed. Earrings and a bracelets were preferred over flashy necklaces and pins.

Evening Gowns

Elegant bias cut floor length gowns with sweeping flared hems was the style of the decade. Modest necklines on the front opened up to bare backs. Black, pastels and jewel tones in silk, satin or lace.



Formal shoes were tall pumps and strappy sandals in gold, silver and jewel tones.

Create your 1930s style at
VINTAGEDANCER.COM/1930s

18V2022—This elegant, long-sleeved, floor-length gown is made of silk and features a high neckline, a fitted bodice, and a full skirt with a subtle pleated detail. **\$14.98**

18V2023—This elegant, long-sleeved, floor-length gown is made of silk and features a high neckline, a fitted bodice, and a full skirt with a subtle pleated detail. **\$14.98**

18V2024—This elegant, long-sleeved, floor-length gown is made of silk and features a high neckline, a fitted bodice, and a full skirt with a subtle pleated detail. **\$14.98**

18V2025—This elegant, long-sleeved, floor-length gown is made of silk and features a high neckline, a fitted bodice, and a full skirt with a subtle pleated detail. **\$14.98**

18V2026—This elegant, long-sleeved, floor-length gown is made of silk and features a high neckline, a fitted bodice, and a full skirt with a subtle pleated detail. **\$14.98**

18V2027—This elegant, long-sleeved, floor-length gown is made of silk and features a high neckline, a fitted bodice, and a full skirt with a subtle pleated detail. **\$14.98**

18V2028—This elegant, long-sleeved, floor-length gown is made of silk and features a high neckline, a fitted bodice, and a full skirt with a subtle pleated detail. **\$14.98**

18V2029—This elegant, long-sleeved, floor-length gown is made of silk and features a high neckline, a fitted bodice, and a full skirt with a subtle pleated detail. **\$14.98**

18V2030—This elegant, long-sleeved, floor-length gown is made of silk and features a high neckline, a fitted bodice, and a full skirt with a subtle pleated detail. **\$14.98**

The NEW SILHOUETTE
In Its Most Gracious Interpretation

18V2031—This elegant, long-sleeved, floor-length gown is made of silk and features a high neckline, a fitted bodice, and a full skirt with a subtle pleated detail. **\$14.98**

18V2032—This elegant, long-sleeved, floor-length gown is made of silk and features a high neckline, a fitted bodice, and a full skirt with a subtle pleated detail. **\$14.98**

18V2033—This elegant, long-sleeved, floor-length gown is made of silk and features a high neckline, a fitted bodice, and a full skirt with a subtle pleated detail. **\$14.98**

18V2034—This elegant, long-sleeved, floor-length gown is made of silk and features a high neckline, a fitted bodice, and a full skirt with a subtle pleated detail. **\$14.98**

18V2035—This elegant, long-sleeved, floor-length gown is made of silk and features a high neckline, a fitted bodice, and a full skirt with a subtle pleated detail. **\$14.98**

18V2036—This elegant, long-sleeved, floor-length gown is made of silk and features a high neckline, a fitted bodice, and a full skirt with a subtle pleated detail. **\$14.98**

18V2037—This elegant, long-sleeved, floor-length gown is made of silk and features a high neckline, a fitted bodice, and a full skirt with a subtle pleated detail. **\$14.98**

18V2038—This elegant, long-sleeved, floor-length gown is made of silk and features a high neckline, a fitted bodice, and a full skirt with a subtle pleated detail. **\$14.98**

18V2039—This elegant, long-sleeved, floor-length gown is made of silk and features a high neckline, a fitted bodice, and a full skirt with a subtle pleated detail. **\$14.98**

18V2040—This elegant, long-sleeved, floor-length gown is made of silk and features a high neckline, a fitted bodice, and a full skirt with a subtle pleated detail. **\$14.98**

OUR GUARANTEE—Your Money Back If You Are Not Satisfied



When You "Dress-up"
The Long Sleeve -
a New
Hollywood
Success

In Our Finest
Silk Canton Crepe
\$4.98

AN AUTOGRAPHED FASHION
Now as Hollywood by
Loretta Young

THIS LONG SLEEVED FIVE-
finger dress is a masterpiece that
it makes the dress perfect for
all sorts of occasions. Sleeve
with high collar at the top and
opening from the elbow to the wrist.
The top rim with the elegant
flared, ruffled neck, makes
the waist and hips and back.
Shoulder detail - and our very
exclusive Canton Crepe and
silk lining. (Please note and see the
Label in your dress. Size 14.)

Misses Size: 14 16 18 20 22
Bust Measure: 32 34 36 38
Length: about 52 inches

3114601 - Normal Size
3114602 - Size 14
3114603 - Size 16
3114604 - Size 18
3114605 - Size 20
3114606 - Size 22

See dress from New York to you
in our per package with free
sample. (See Page 11, Page 12,
Shipping weight, 1 lb. 12 oz.)

\$3.98

High Ruffled Neck
Moire Tulle Yoke

\$2.95

Permanent Finish
Sheer Organdy

EXCELLENT QUALITY SILK Crepe
finished with Neve Ruffin Tulle
lace and ribbon. Lacy standing col-
lar with ruffled yoke. Also
also finished with silk.

Misses Size: 14 16 18 20 22
Bust Measure: 32 34 36 38
Length: about 52 inches. (See size)

3114607 - Blue Silk
3114608 - Blue Silk
3114609 - Blue Silk
3114610 - Blue Silk
3114611 - Blue Silk

See dress from New York to you
in our per package with free
sample. (See Page 11, Page 12,
Shipping weight, 1 lb. 12 oz.)

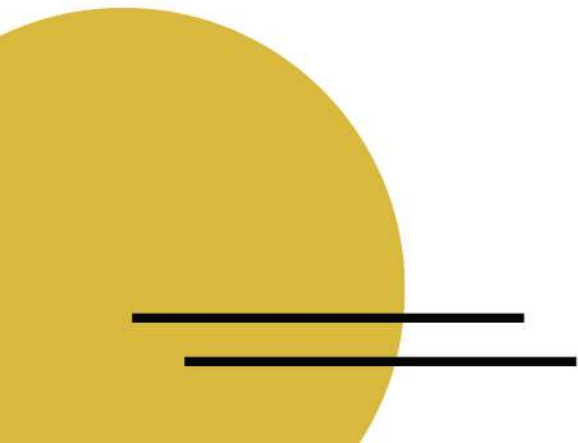
THE MATERIAL IN OUR FINEST
Sheer Organdy - permanent finish
large double row collar finished with
hardening silk. The size shown.

Misses Size: 14 16 18 20 22
Bust Measure: 32 34 36 38
Length: about 52 inches. (See size)

3114612 - White with Red
3114613 - White with Blue
3114614 - White with Green

See dress from New York to you
in our per package with free
sample. (See Page 11, Page 12,
Shipping weight, 1 lb. 12 oz.)

Gorgeous Party frocks - Direct from New York -

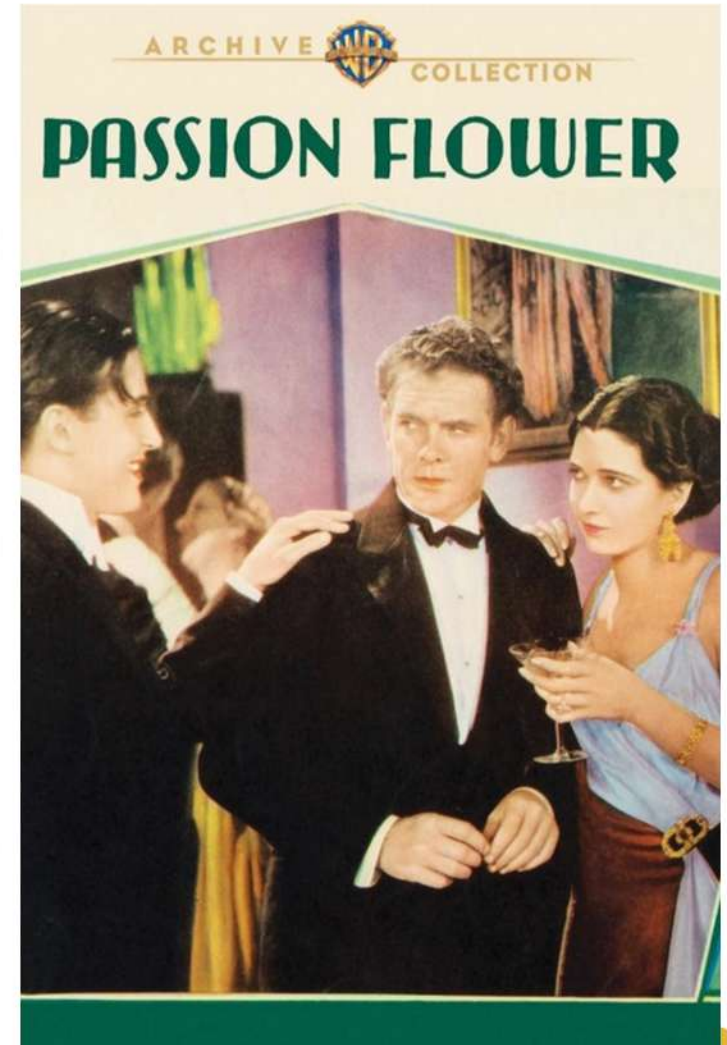




Successes



Passion

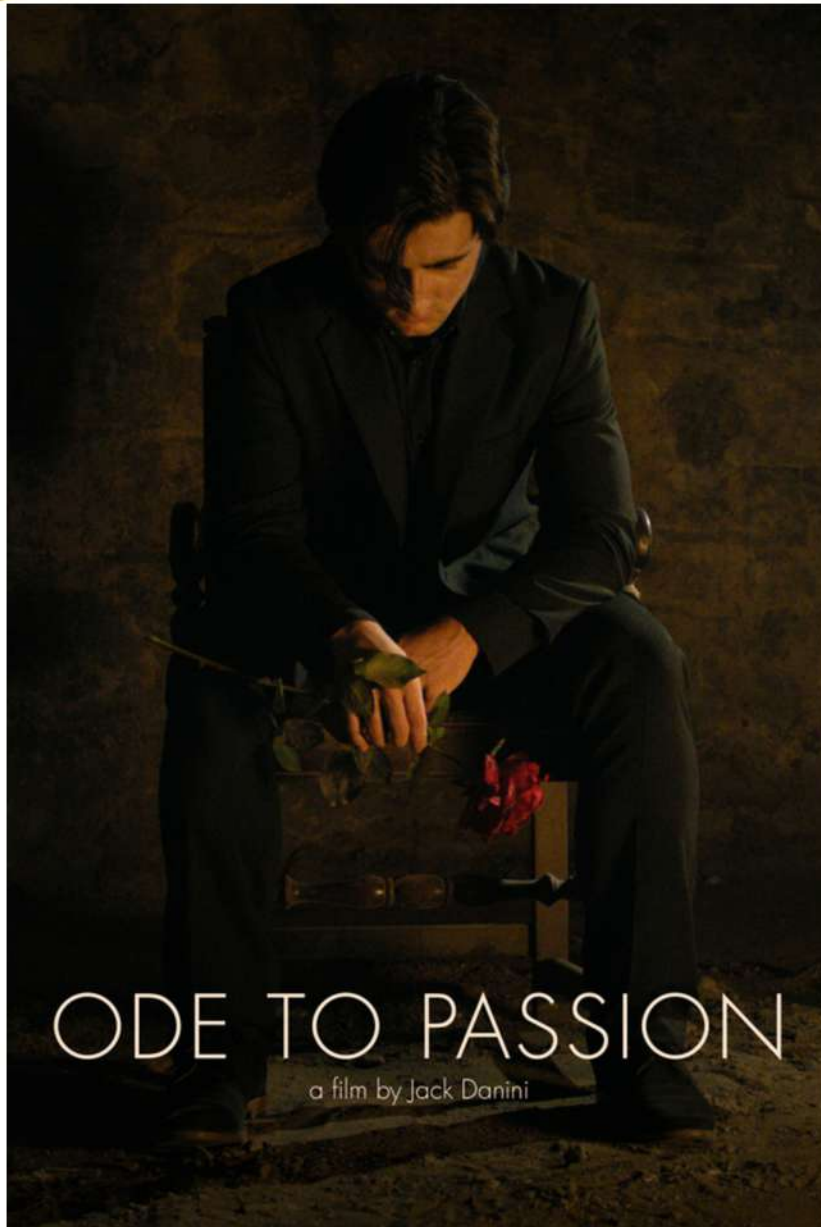


https://www.imdb.com/title/tt0021240/?ref_=ttmi_tt



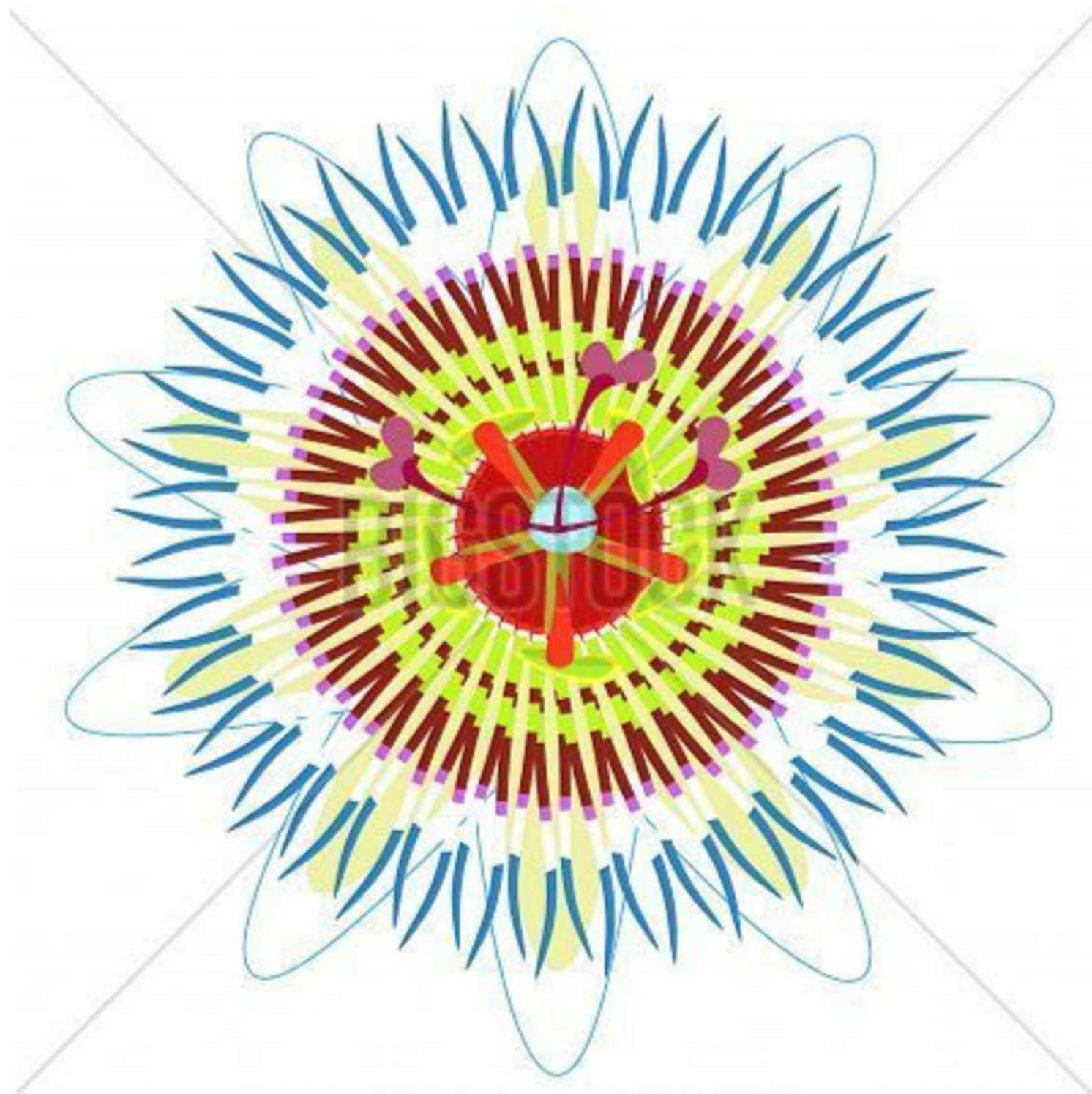
https://www.imdb.com/title/tt0021240/?ref_=ttmi_tt

Ode to Passion 2020





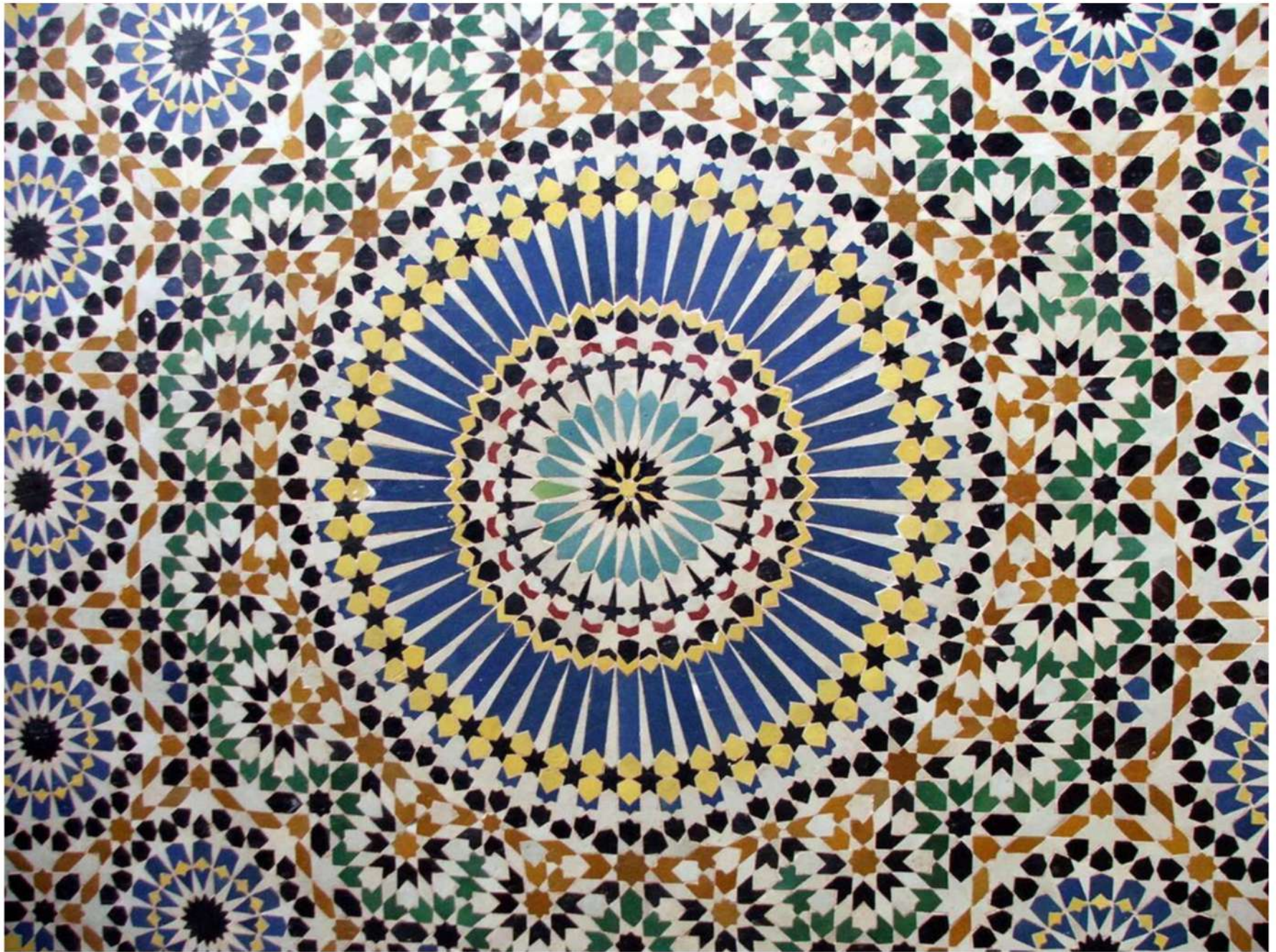




















Passion

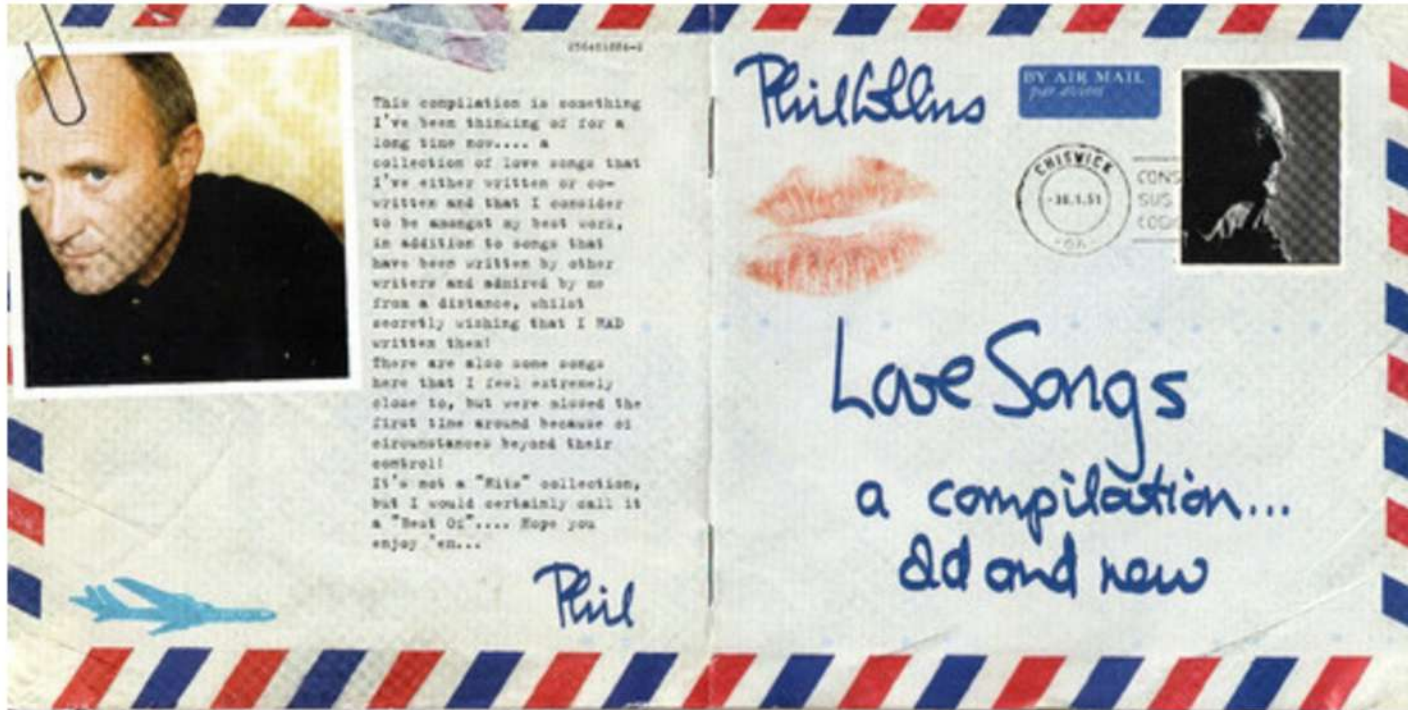








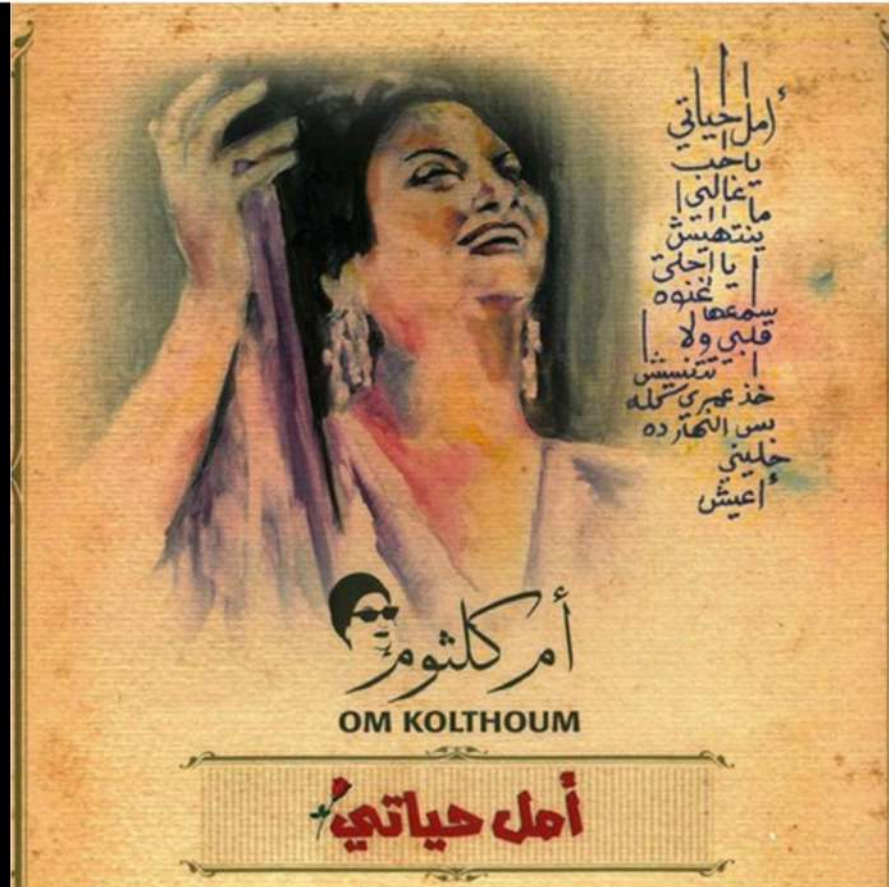




Hope

Song of Hope (Heaven Come Down)

Robbie Seay Band







TODAY



TOMORROW



Don't lose hope.
(You never know what tomorrow will bring.)

Hope



if you Success you will find
your passion in life, follow
your hope to find your love